



# FlexFold LP300-400

[www.foltex.nl](http://www.foltex.nl)

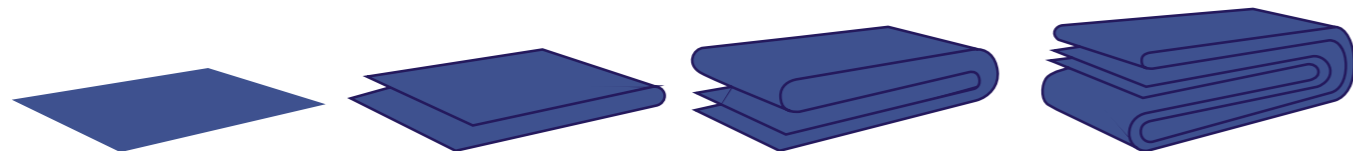
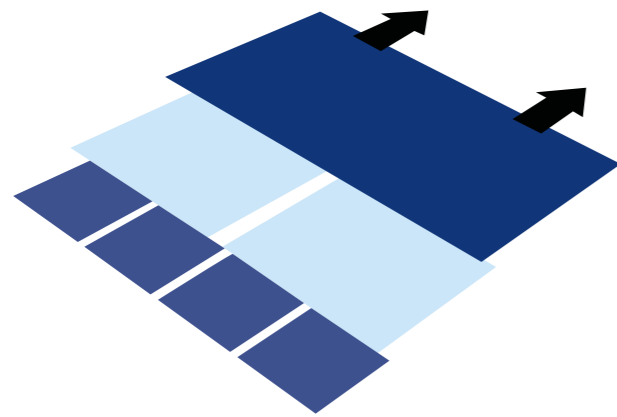


**FOLTEX**



The FlexFold LP300-400 is a flatwork folder able to fold the complete range of small and large flatwork linen such as sheets, duvets, table linen, napkins, pillow cases etc.

The FlexFold LP300-400 differs from other folders because of its simple yet durable design which achieves both high quality folding and high production rates. The FlexFold LP300-400 is available in single and multi lane configurations. In either configuration, the FlexFold LP300-400 makes 2 or 3 primary folds in up to 4 lanes and 1, 2 or 3 (internal) cross folds. Each piece is measured before it enters the first primary fold. The microprocessor selects the appropriate primary fold accordingly. Once folded, the piece is measured again prior to entering the cross fold section to accomplish the desired cross fold. After the cross folds are made, the piece is discharged towards the stacker station. The folder can be supplied with either rotary type stackers or drop-stackers which are available either as single or double units. It is also possible to work without a stacker and deliver onto a delivery table.



### LATERAL FOLD PRINCIPLE

The lateral folds are carried out by air knives forcing the linen between two pinch rollers. The folded pieces are then transferred between conveyor belts to the next lateral fold. The use of double air tubes delivers unbeatable consistency and quality. The length is measured before entering the lateral fold section by means of

a wheel encoder and maintenance-free photocells (no reflectors). The FlexFold LP300-400 is a machine built for life and requires little maintenance in comparison with competing folders. The drive system of the lateral fold section is done by maintenance-free timing belts.



### CROSS FOLD PRINCIPLE

The first cross fold rollers are both driven by a frequency controlled motor. The first cross fold has an effective opening size of 900 mm, thus enabling pieces of 3400 mm to be folded with 2 lateral folds.

The rollers of the first cross fold open automatically when a jam occurs. The size of the primary folded pieces are checked at the first cross fold and crooked pieces are automatically detected and rejected. The first cross fold is made by knife and the second

cross fold (for large pieces only) is made by knife and reversing belts. It is possible to bypass the second cross fold if required. The third cross fold is made by knife forcing the pieces between pinch rollers. Reversing the position of the stacker station from one side to an other is very easily accomplished.

The FlexFold LP 300-400 can also be provided without a crossfold section.



## FEATURES

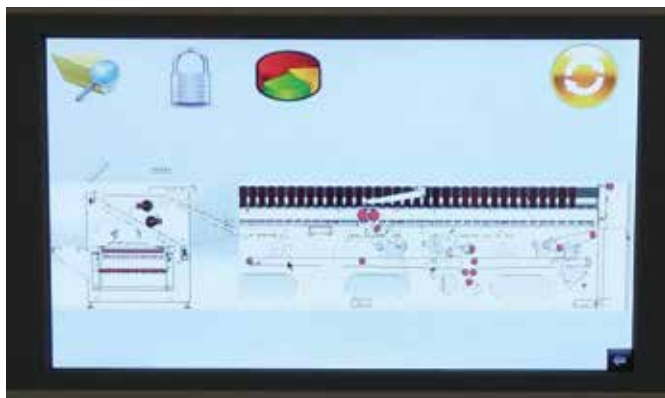
- Strong rigid simple design.
- Maintenance-free transmission due to timing belts / flat belt drive. No chains, so no lubrication required.
- Simple frequency driven motors instead of complicated high maintenance mechanical clutch/brake devices.
- Maintenance-free proximity photocells instead of troublesome reflectors.
- Automatic speed synchronization with ironer (8 – 50 m/min).
- Automatic rejection of misfed / misaligned pieces.
- Reject for re-wash or repair.
- Double blow tubes in primary folds.
- First cross fold rollers open automatically in case of jam.
- Adjustable speed of primary fold and cross fold section, due to frequency inverters.
- Automatic fold selection based on piece dimensions.

- Several cross fold configurations possible.
- All cross folds are made by mechanical knife.
- Wide cross fold section (900mm).
- Can be coupled to rotary stacker, drop stacker or roll-off stacker.
- Optional anti-static bar.
- Optional reject scanner.



## CONTROL SYSTEM

The FlexFold LP300-400 has a colour touchscreen with a simple, concise layout and user-friendly operation. Modifying, creating or changing programmes, collecting "counts" or even testing input / outputs couldn't be simpler. The machine is controlled by a highly reputable and reliable PLC control. Up to 99 different folding programs can be made. Data can be easily backed up with a USB. Speed control and program communication integration with an ironer / feeder is also available.



## TECHNICAL SPECIFICATIONS

**Working width:** 3000, 3300, 3500 or 4000mm / 120" - 155"

**Number of lateral folds:** 1, 2 or 3

**Number of lanes (lateral fold section):** 1, 2, 3 or 4

**Number of lanes (cross fold):** 1 or 2

**Number of cross folds:** 1, 2 or 3

**Maximum piece width (cross fold):** 900mm / 35"

**Air pressure:** 6 bar

**Air connection:** Ø13mm

**Power supply:** 3 x 380/415V, 50/60Hz or 3 x 208/240V, 50/60Hz  
(other supplies on request)

**Power consumption:** 2.5 kWh



FOLTEX B.V.

Ambachtsweg 2

NL-5071 NS Udenhout

The Netherlands

+31 (0)13 – 511 07 07

info@foltex.nl

www.foltex.nl